

Is my relationship unhealthy or abusive?

Domestic violence is a pattern of coercive, controlling behavior used to establish power over another person who is often a family member, spouse, dating or intimate partner.

This power and control is maintained using different types of abuse to instill fear, destroy confidence or remove resources. These tactics may be directed at the victim, other family members, children, or pets in an attempt to control the victim.

Some common examples include:

- Stalking and harassment
- Controlling your money
- Physical violence, such as pushing or hitting
- Preventing you from working
- Forcing you to have sex
- Isolating you from friends and family
- Controlling your means of communication
- Being overly jealous
- Being violent even after you separate

What if I don't want to leave or end my relationship?

Some victims want to leave. Others don't, they just want the abuse to stop. Our advocates will help get you connected to services that can help you think through a safety plan that works best regardless of the future of your relationship.



Advocates are available 24/7!

Call • Text • Chat • Email

All services are confidential, safe, free, voluntary and available 24 hours per day, 7 days per week.



CALL OR TEXT
888.774.2900

CHAT
CTSafeConnect.org



EMAIL
SafeConnect@ctcadv.org

SAFE CONNECT IS A PROJECT OF

cca | DV

Connecticut Coalition Against Domestic Violence

www.ctcadv.org

This project is funded in part by the CT Department of Social Services, CT Department of Housing, and the CT Judicial Branch Office of Victim Services.



CTSafeConnect

**CT's Domestic Violence
Information & Resource Line**

**Relationships can be difficult.
We're here to help.**

CTSafeConnect.org | 888.774.2900

Call • Text • Chat • Email • 24/7

confidential, safe, free



What to expect from Safe Connect

Safe Connect is the entry point for domestic violence services in Connecticut, providing a coordinated response to the needs of survivors. We are a team of friendly advocates here to support you and connect you to resources.

We recognize that you are the expert of your own life and will always follow your lead. While we will ask questions, you don't have to answer more than you're comfortable sharing. We want to understand your wants, needs, and worries so that we can connect you to one of CCADV's 18 domestic violence member organizations who will offer you relevant services and resources.

Who we serve

Domestic violence is a public health crisis that impacts us all. Violence can occur within any relationship, so we help people of every:

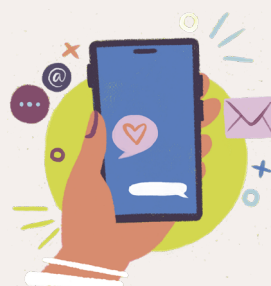
- Age
- Ability
- Gender identity
- Racial & ethnic identity
- Religion
- Sexual orientation
- Socioeconomic status
- Immigration status

We understand that survivors experience abuse differently based on who they are, where they come from and what they've experienced.

Does Safe Connect call Protective Services or the Police?

While we are not affiliated with either entity, our advocates are mandated reporters. If you share that a child or person with disabilities is being abused/neglected, or that you might hurt yourself or someone else, we are required to make a report. In the event that this is necessary, our advocates will work with you to ensure you have the support you need.

Safe Connect is a friendly resource that's always in your back pocket!



Your safety is our priority

Safe Connect will never question your reason 'why'. We want to understand your priorities so we can connect you to your local CCADV member organization to receive the services most relevant to you and your situation.

While you can't change a person's choice to use violence in their relationships, you can take steps to increase your & your children's safety. Advocates at your local CCADV member organization will help guide you, building upon your existing strengths while sharing information and presenting options.

Services provided by our members

CCADV has 18 member organizations across the state providing critical support to victims and survivors. Safe Connect will connect you with your local CCADV member organization for ongoing services. All services are confidential, safe, free and voluntary.

- Individual counseling and group support
- Crisis response and safety planning
- Age-appropriate advocacy and support for children and teens
- Advocacy for accessing basic needs
- Risk assessment and safety planning
- Emergency shelter and other short- and long-term housing options
- Civil and criminal court-based advocacy
- Community education and prevention

Safe Connect will connect you with your local CCADV domestic violence member organization for ongoing support and services.



The Center for Family Justice
Bridgeport

The Center for Empowerment & Education
Danbury

Domestic Violence Program
United Services, Inc.
Dayville | Willimantic

The Network
Enfield

YWCA Greenwich Harmony Project
Greenwich

Interval House
Hartford

Project SAGE
Lakeville

Chrysalis Domestic Violence Services
Meriden

New Horizons
Middletown

Prudence Crandall Center
New Britain

The Umbrella Center for Domestic Violence Services, BHcare
New Haven | Shelton

Safe Futures
New London

Domestic Violence Crisis Center
Norwalk | Stamford

Susan B. Anthony Project
Torrington

Safe Haven of Greater Waterbury
Waterbury